

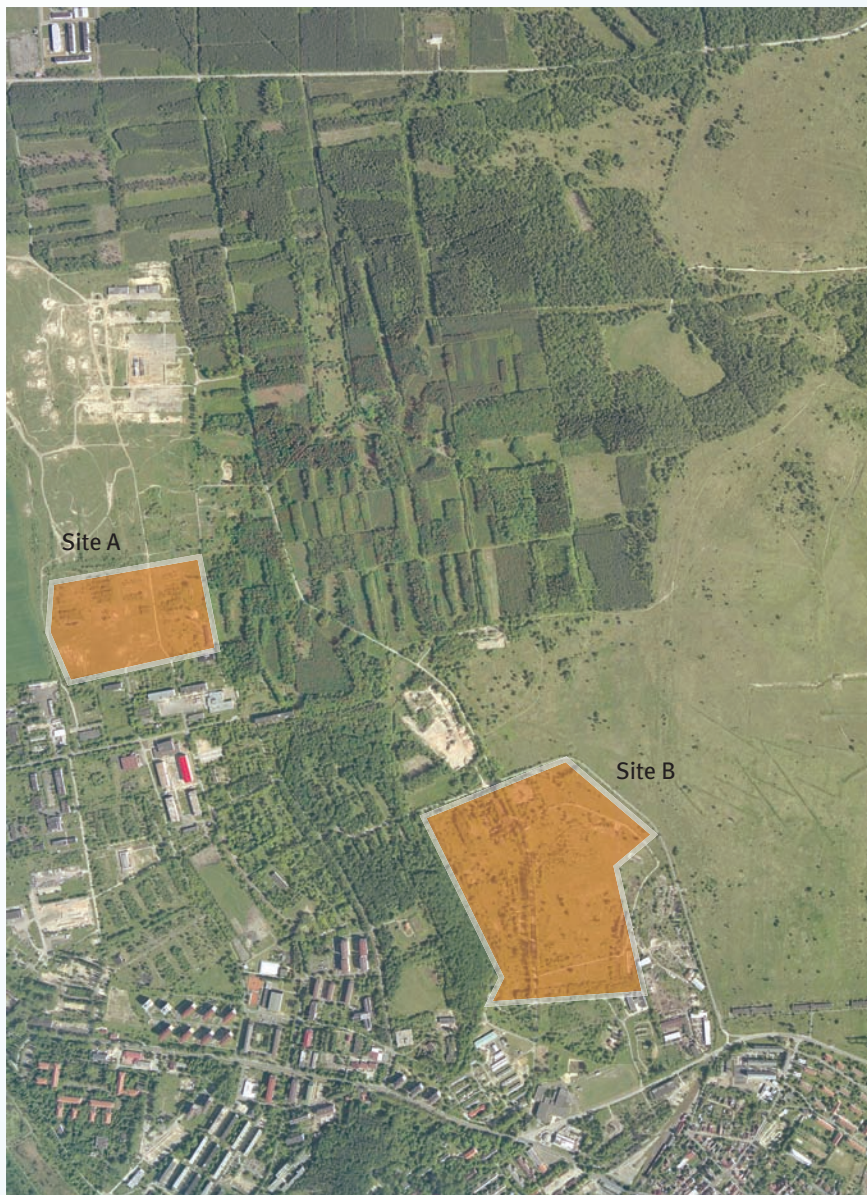
# Milovice

## Topolová and Pod Liškami Industrial Zones 10 ha and 33.9 ha for industry and storage

Milovice, the most dynamically developing town in the Czech Republic, is northeast of Lysá nad Labem and was part of a military training zone until 1991. Following the departure of the Soviet army, conversion of the vast areas and numerous buildings had begun. In 1991, the town's population was 1,100. Today, this figure is over 7,000.

The development sites are connected to the developed areas of the town (Topolová – Site A on the northwest side in a part of the municipality of Mladá, Pod Liškami – Site B on the north side). The advantages of the zones include easy access to the I/10 expressway Prague–Turnov and the D11 motorway Prague–Poděbrady (which will extend to Poland in the future), the abundance of space, and favourable financial conditions for the sites.

Central Bohemia Region





## Milovice

**Population:** (census 1 March 2001/1 January 2007): 4,212/7,268

**Workforce:** 2,294 (census 1 March 2001)

**Workforce in the region:** 592,600 (Central Bohemia Region – annual average 2006)

**Average rate of registered unemployment:** (2006) 8.1% (Nymburk District, 8.1% (Czech Rep.))

**Average gross monthly wage:** (2006) CZK 19,856 (Central Bohemia Region), CZK 20,211 (Czech Rep.)

**Local businesses:** only smaller providers of goods and services

**Distance:** Prague 45 km, Mladá Boleslav 20 km, Nymburk 15 km, Benátky nad Jizerou 9 km

### Geographic and historical features

191 m above sea level • first documented in the 14<sup>th</sup> century

- Neo-Gothic Church of St Katherine
- 1904–91 military training zone
- wildlife area with an “untouched” military zone

**Attractive surroundings:** historical zone and golf course in Benátky nad Jizerou, chateau and monastery in Lysá nad Labem

**Municipality with extended powers (3<sup>rd</sup> tier):** Lysá nad Labem

**Municipal office (2<sup>nd</sup> tier):** Lysá nad Labem

**Building authority:** Milovice

**Financial office:** Nymburk

**Trade licensing office:** Lysá nad Labem

## Investment zone

### Principal data

**Area:** Topolová 10 ha (Site A), Pod Liškami 33.9 ha (Site B)

**Anticipated use:** industry and storage

**Zone location:** • Site A (Topolová) on the northwest side of town in a part of the municipality of Mladá • Site B (Pod Liškami) on the north side of town

**Current use and land ownership:** unused, undeveloped land exclusively state-owned

### Municipal plan – regulations, restrictions

Use of both zones for industrial production and storage complies with the valid municipal plan.

Before use, land clearance is necessary, including a pyrotechnical survey.

### Transportation

**Roads:** easy access to the R10 expressway and the D11 motorway, local connecting routes require reconstruction

**Railways:** line no. 232 Lysá nad Labem–Milovice, Czech Railway line near Site B

**Regional airports:** non-functioning former military airfield Boží Dar on site, owned by the Central Bohemia Region, public national airfield in Mladá Boleslav (20 km)

### Infrastructure

The data concern Site A; Site B does not have an infrastructure yet.

**Water:** DN 200 pipeline about 80 m from the site boundary

**Sewer system:** DN 200 pipeline about 200 m from the site boundary

**Electricity:** energy supply from a 110/22 kV line Milovice; transformer stations must be constructed

**Natural gas:** PE 225 medium-pressure gas line 80 m from the site boundary

**Industrial waste:** industrial waste storage 7 km away (Benátky nad Jizerou)

## Contacts

### Municipal Office of Milovice:

5. května 71, 289 23 Milovice, phone: +420 325 577 203, [www.mesto-milovice.cz](http://www.mesto-milovice.cz)

### Regional Office of the Central Bohemia Region:

Regional Development Department, Zborovská 11, 150 21 Prague 5, phone: +420 257 280 111, [www.kr-stredocesky.cz](http://www.kr-stredocesky.cz)

### Building authority:

Municipal Office of Milovice, 5. května 71, 289 23 Milovice, phone: +420 325 577 967